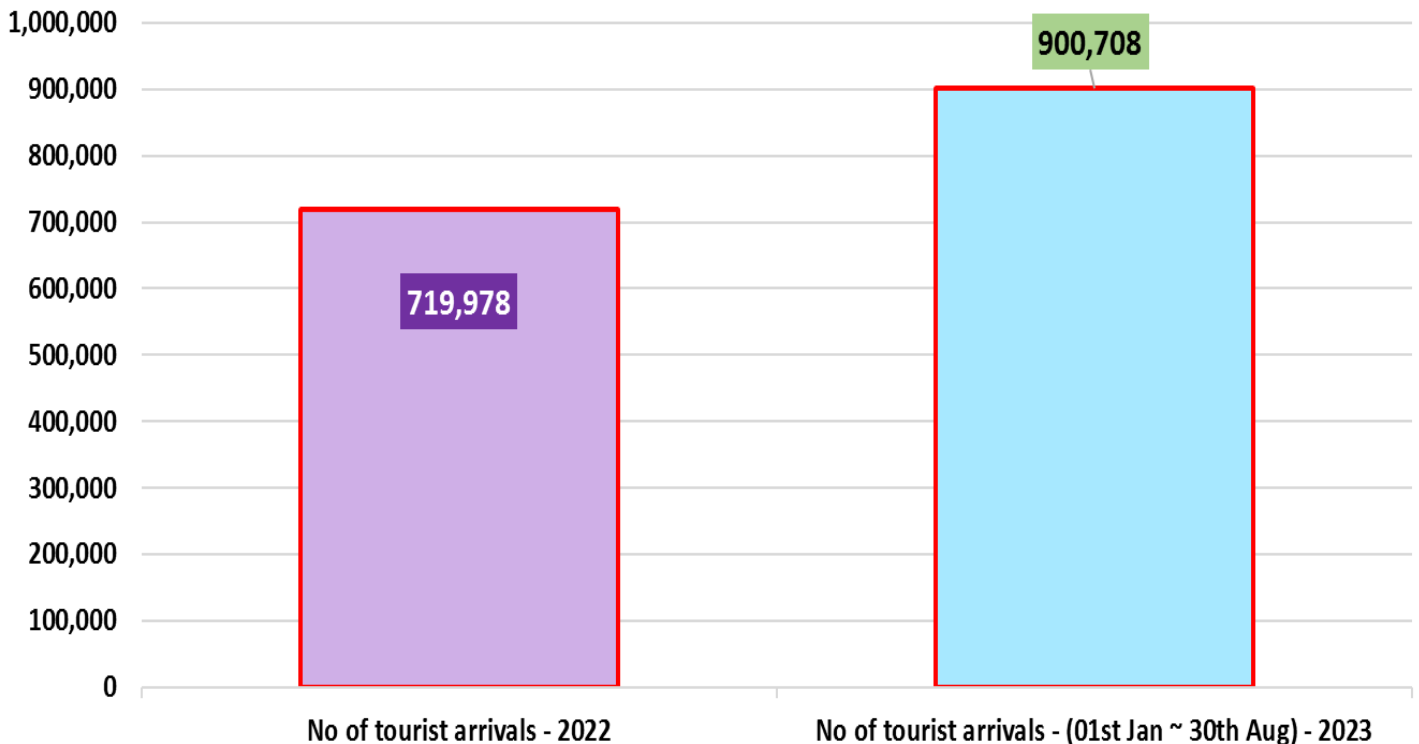


# Summary report on tourist arrivals up to 30<sup>th</sup> August 2023

2022		2023		
Month	Number of Tourists	Month	Number of Tourists	percentage Change (23/22) %
January	82,327	January	102,545	24.6
February	96,507	February	107,639	11.5
March	106,500	March	125,495	17.8
April	62,980	April	105,498	67.5
May	30,207	May	83,309	175.8
June	32,856	June	100,388	205.5
July	47,293	July	143,039	202.4
August	37,760	August (01 ~ 30)	132,795	
September	29,802			
October	42,026			
November	59,759			
December	91,961			
<b>Total</b>	<b>719,978</b>		<b>900,708</b>	

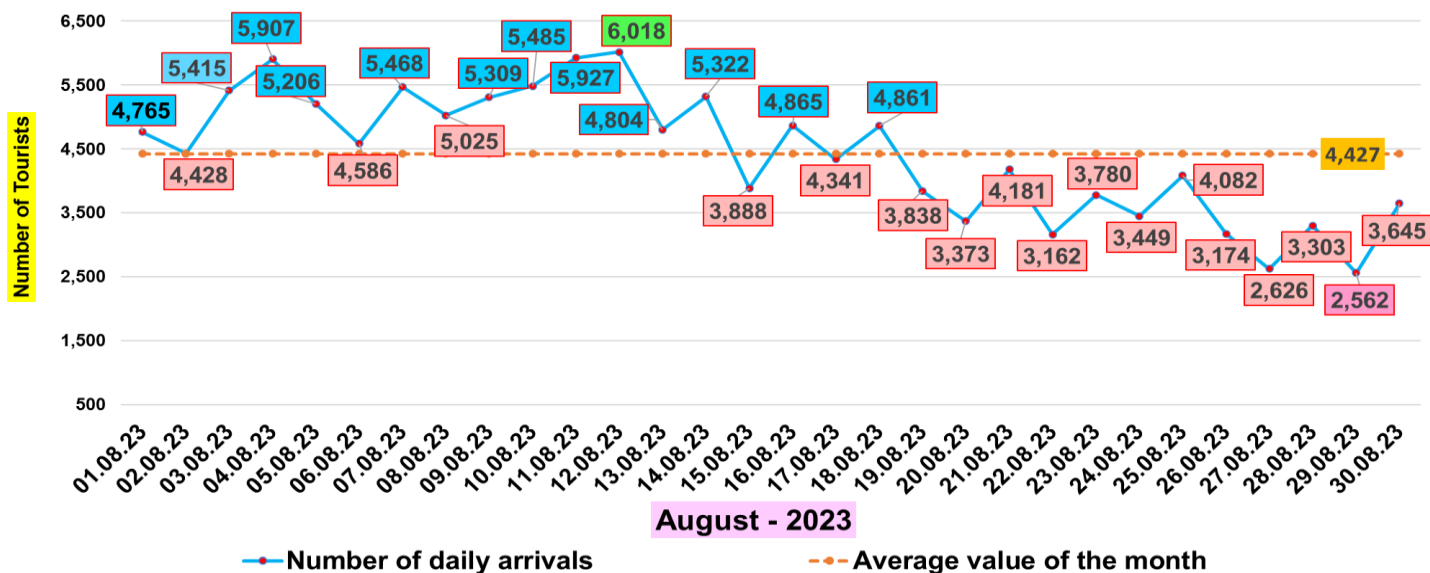
## Number of tourist arrivals - 2022 & 2023 (up to 30<sup>th</sup> Aug)



## Number of tourists arrivals – August (01<sup>st</sup> ~ 30<sup>th</sup> ) 2023

Date	Number of Tourists
01.08.23	4,765
02.08.23	4,428
03.08.23	5,415
04.08.23	5,907
05.08.23	5,206
06.08.23	4,586
07.08.23	5,468
08.08.23	5,025
09.08.23	5,309
10.08.23	5,485
11.08.23	5,927
12.08.23	6,018
13.08.23	4,804
14.08.23	5,322
15.08.23	3,888
16.08.23	4,865
17.08.23	4,341
18.08.23	4,861
19.08.23	3,838
20.08.23	3,373
21.08.23	4,181
22.08.23	3,162
23.08.23	3,780
24.08.23	3,449
25.08.23	4,082
26.08.23	3,174
27.08.23	2,626
28.08.23	3,303
29.08.23	2,562
30.08.23	3,645
<b>Total</b>	<b>132,795</b>

### Daily distribution of tourist arrivals , August 2023

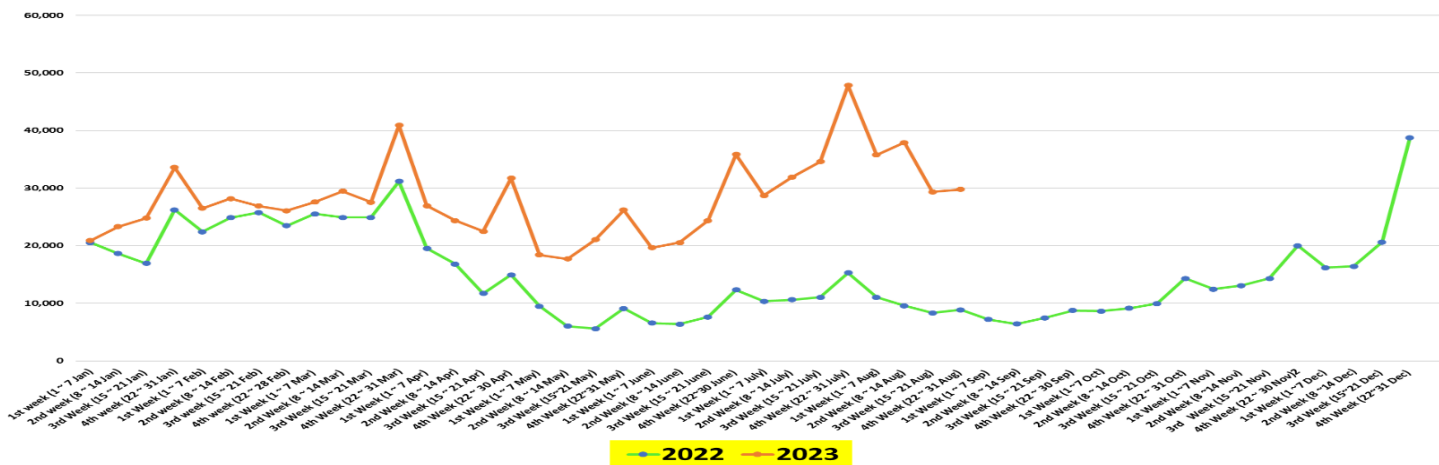


## Weekly tourist arrival distribution- from January 2022 to August 2023

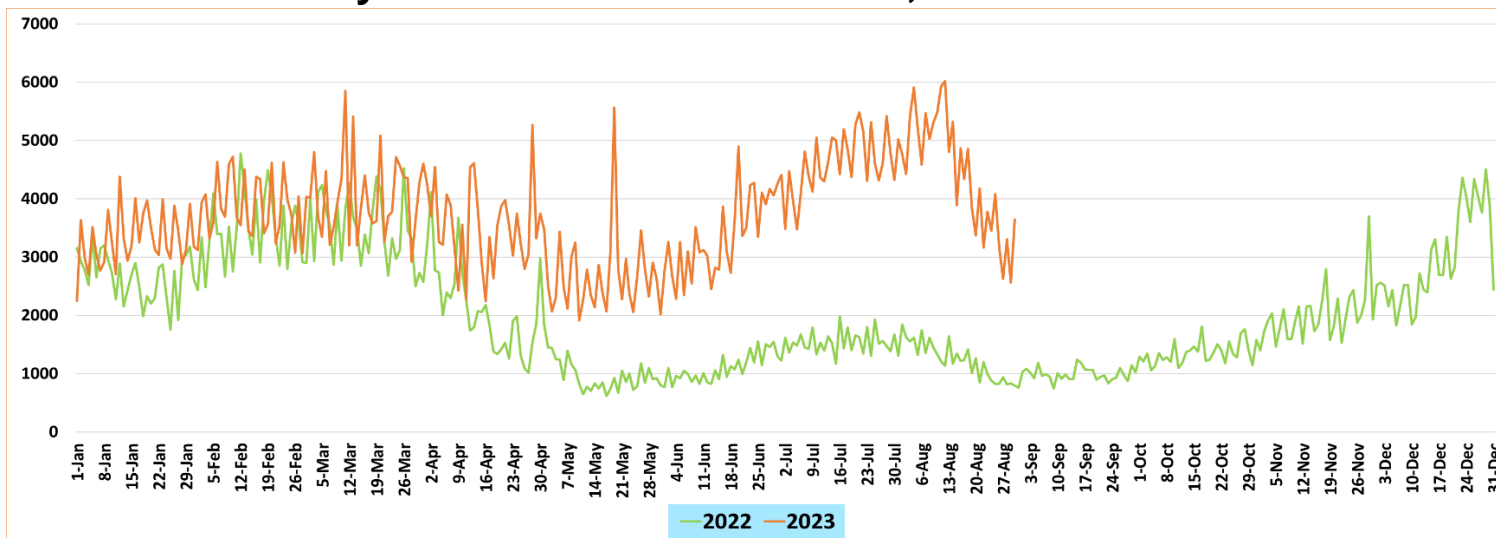
Week	Number of tourists	Total
1 <sup>st</sup> week (1 ~ 7 Jan)- 22	20,544	82,327
2 <sup>nd</sup> week (8 ~ 14 Jan)- 22	18,628	
3 <sup>rd</sup> Week (15 ~ 21 Jan) - 22	16,917	
4 <sup>th</sup> week (22 ~ 31 Jan)- 22	26,238	
1 <sup>st</sup> Week (1 ~ 7 Feb) - 22	22,411	96,507
2 <sup>nd</sup> week (8 ~ 14 Feb)- 22	24,871	
3 <sup>rd</sup> week (15 ~ 21 Feb)- 22	25,766	
4 <sup>th</sup> week (22 ~ 28 Feb)- 22	23,459	
1 <sup>st</sup> Week (1 ~ 7 Mar) - 22	25,507	106,500
2 <sup>nd</sup> Week (8 ~ 14 Mar) - 22	24,891	
3 <sup>rd</sup> Week (15 ~ 21 Mar) - 22	24,918	
4 <sup>th</sup> Week (22 ~ 31 Mar) - 22	31,184	
1 <sup>st</sup> Week (1 ~ 7 Apr) - 22	19,523	62,980
2 <sup>nd</sup> Week (8 ~ 14 Apr) - 22	16,805	
3 <sup>rd</sup> Week (15 ~ 21 Apr) - 22	11,716	
4 <sup>th</sup> Week (22 ~ 30 Apr) - 22	14,936	
1 <sup>st</sup> Week (1 ~ 7 May) - 22	9,493	30,207
2 <sup>nd</sup> Week (8 ~ 14 May) - 22	6,009	
3 <sup>rd</sup> Week (15~21 May) - 22	5,600	
4 <sup>th</sup> Week (22~31 May) - 22	9,105	
1 <sup>st</sup> Week (1 ~ 7 June) - 22	6,555	32,856
2 <sup>nd</sup> Week (8 ~ 14 June) - 22	6,382	
3 <sup>rd</sup> Week (15 ~ 21 June) - 22	7,597	
4 <sup>th</sup> Week (22~30 June) - 22	12,322	
1 <sup>st</sup> Week (1 ~ 7 July) - 22	10,334	47,293
2 <sup>nd</sup> Week (8 ~ 14 July) - 22	10,622	
3 <sup>rd</sup> Week (15 ~ 21 July) - 22	11,056	
4 <sup>th</sup> Week (22 ~ 31 July) - 22	15,281	
1 <sup>st</sup> Week (1 ~ 7 Aug) - 22	11,046	37,760
2 <sup>nd</sup> Week (8 ~ 14 Aug) - 22	9,550	
3 <sup>rd</sup> Week (15 ~ 21 Aug) - 22	8,317	
4 <sup>th</sup> Week (22 ~ 31 Aug) - 22	8,847	
1 <sup>st</sup> Week (1 ~ 7 Sep) - 22	7,182	29,802
2 <sup>nd</sup> Week (8 ~ 14 Sep) - 22	6,408	
3 <sup>rd</sup> Week (15 ~ 21 Sep) - 22	7,478	
4 <sup>th</sup> Week (22 ~ 30 Sep) - 22	8,734	
1 <sup>st</sup> Week (1 ~7 Oct) - 22	8,614	42,026
2 <sup>nd</sup> Week (8 ~ 14 Oct) - 22	9,125	
3 <sup>rd</sup> Week (15 ~ 21 Oct) - 22	9,968	
4 <sup>th</sup> Week (22 ~ 31 Oct) - 22	14,319	
1 <sup>st</sup> Week (1 ~7 Nov) - 22	12,431	59,759
2 <sup>nd</sup> Week (8 ~14 Nov) - 22	13,051	
3 <sup>rd</sup> Week (15 ~21 Nov) - 22	14,298	
4 <sup>th</sup> Week (22 ~ 30 Nov) - 22	19,979	
1 <sup>st</sup> Week (1 ~7 Dec) - 22	16,169	91,961
2 <sup>nd</sup> Week (8 ~14 Dec) - 22	16,418	
3 <sup>rd</sup> Week (15~21 Dec) - 22	20,610	
4 <sup>th</sup> Week (22~31 Dec) - 22	38,764	
<b>Year - 2023</b>		
1 <sup>st</sup> week (1 ~ 7 Jan)- 23	20,875	102,545
2 <sup>nd</sup> week (8 ~ 14 Jan)- 23	23,295	
3 <sup>rd</sup> week (15 ~ 21 Jan)- 23	24,796	
4 <sup>th</sup> week (22 ~ 31 Jan)- 23	33,579	
1 <sup>st</sup> week (1 ~ 7 Feb)- 23	26,506	107,639
2 <sup>nd</sup> week (8 ~ 14 Feb)- 23	28,179	
3 <sup>rd</sup> week (15 ~ 21 Feb)- 23	26,886	
4 <sup>th</sup> week (22 ~ 31 Feb)- 23	26,068	

Week	Number of tourists	Total
1 <sup>st</sup> week (1 ~ 7 Mar)- 23	27,573	125,495
2 <sup>nd</sup> week (8 ~ 14 Mar)- 23	29,464	
3 <sup>rd</sup> week (15 ~ 21 Mar)- 23	27,546	
4 <sup>th</sup> week (22 ~ 31 Mar)- 23	40,912	
1 <sup>st</sup> week (1 ~ 7 Apr)- 23	26,911	105,498
2 <sup>nd</sup> week (8 ~ 14 Apr)- 23	24,362	
3 <sup>rd</sup> week (15 ~ 21 Apr)- 23	22,506	
4 <sup>th</sup> week (22 ~ 30 Apr) - 23	31,719	
1 <sup>st</sup> week (1 ~ 7 May) - 23	18,401	83,309
2 <sup>nd</sup> week (8 ~ 14 May) - 23	17,699	
3 <sup>rd</sup> week (15 ~ 21 May) - 23	21,030	
4 <sup>th</sup> week (22 ~ 31 May) - 23	26,179	
1 <sup>st</sup> week (1 ~ 7 June) - 23	19,656	100,388
2 <sup>nd</sup> week (8 ~ 14 June) - 23	20,541	
3 <sup>rd</sup> week (15 ~ 21 June) - 23	24,346	
4 <sup>th</sup> week (22 ~30 June) - 23	35,845	
1 <sup>st</sup> week (1 ~ 7 July) - 23	28,711	143,039
2 <sup>nd</sup> week (8 ~ 14 July) - 23	31,902	
3 <sup>rd</sup> week (15 ~ 21 July) - 23	34,594	
4 <sup>th</sup> week (22 ~ 31 July) - 23	47,832	
1 <sup>st</sup> week (1 ~ 7 August) - 23	35,775	132,795
2 <sup>nd</sup> week (8 ~ 14 August) - 23	37,890	
3 <sup>rd</sup> week (15 ~ 21 August) - 23	29,347	
4 <sup>th</sup> week (22 ~ 30 August) - 23	29,783	

### Weekly distribution of tourist arrivals – 2022 & 2023

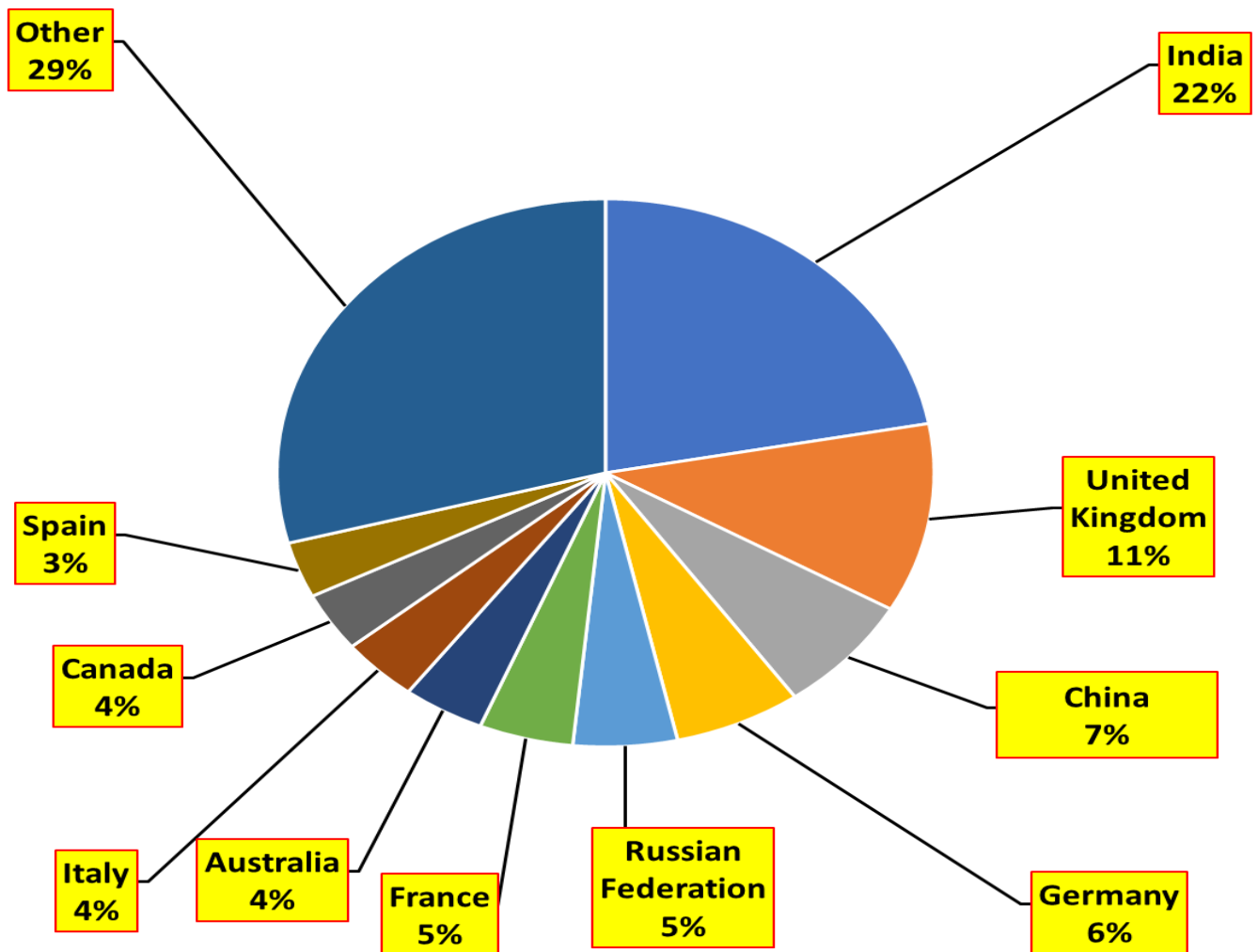


### Daily trend of tourists arrivals , 2022 & 2023



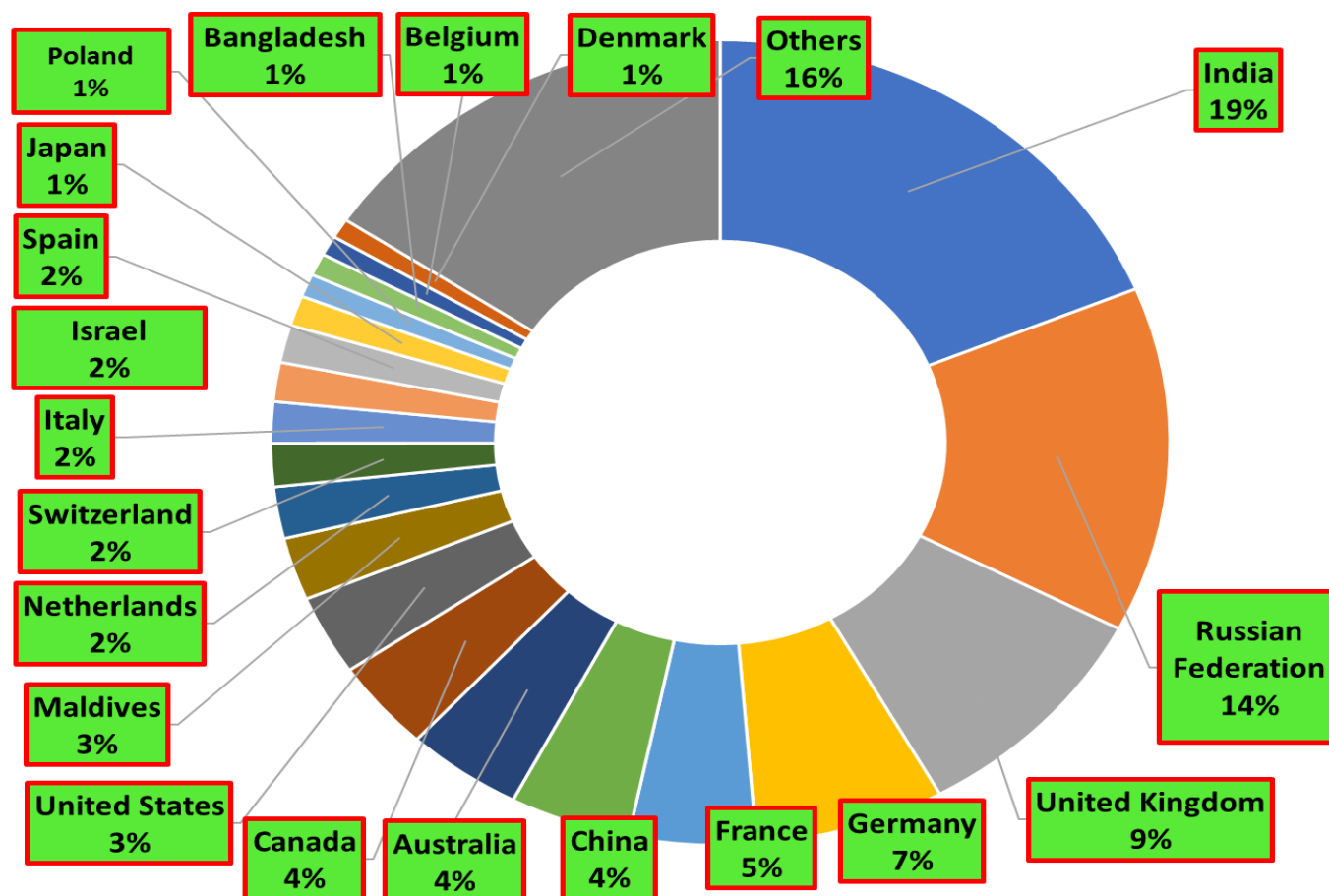
## Top ten source markets - August (1 ~ 30) - 2023

Rank	Country	Number of tourists
1	India	29,372
2	United Kingdom	14,830
3	China	9,221
4	Germany	8,301
5	Russian Federation	6,801
6	France	6,150
7	Australia	5,343
8	Italy	5,058
9	Canada	4,654
10	Spain	4,378
11	Other	38,687
	<b>TOTAL</b>	<b>132,795</b>

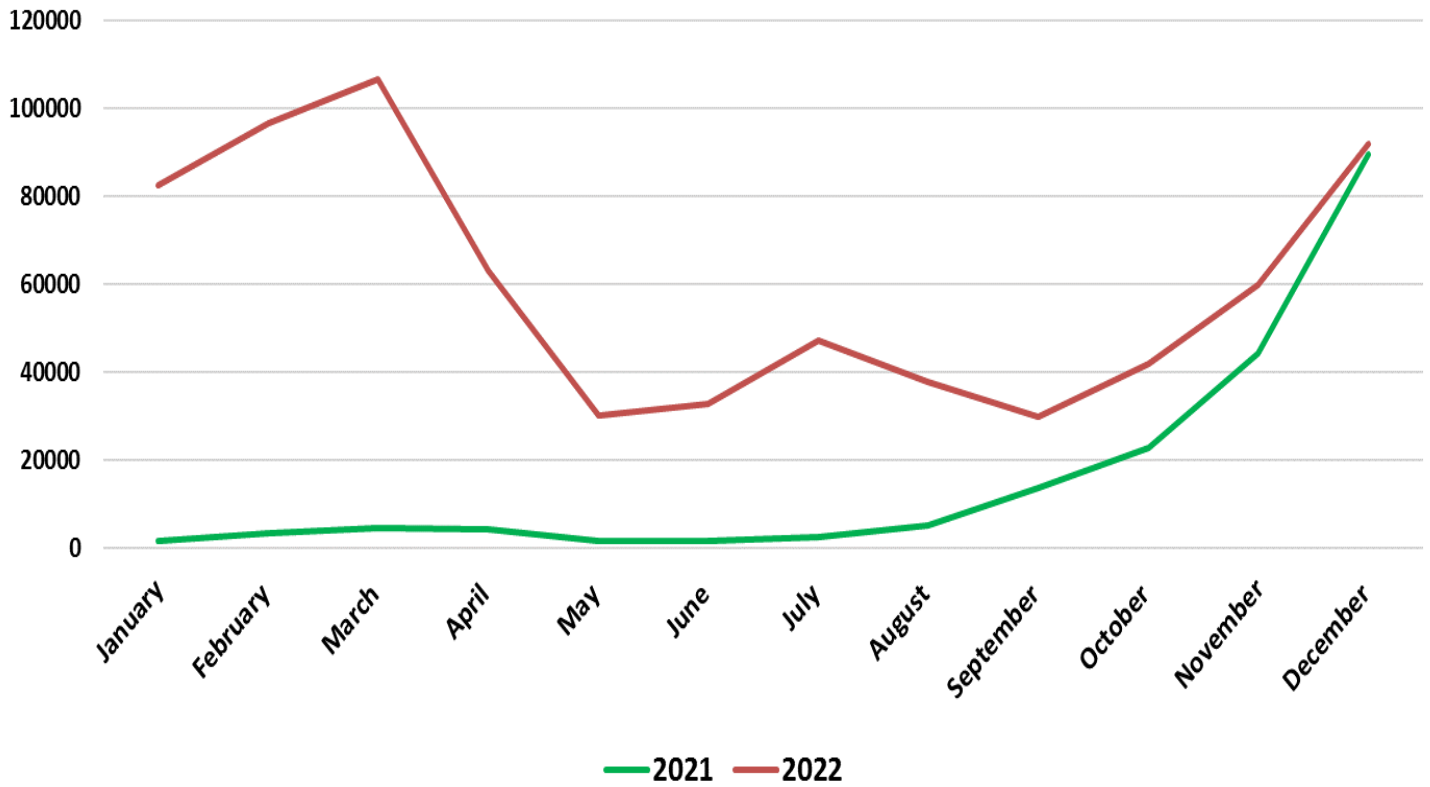


## Top twenty source markets – 01<sup>st</sup> Jan ~ 30<sup>th</sup> Aug 2023

Rank	Country	Number of tourists
1	India	169,026
2	Russian Federation	125,085
3	United Kingdom	83,134
4	Germany	61,511
5	France	41,170
6	China	39,145
7	Australia	37,564
8	Canada	32,817
9	United States	28,897
10	Maldives	22,661
11	Netherlands	18,672
12	Switzerland	15,647
13	Italy	14,915
14	Israel	14,144
15	Spain	13,586
16	Japan	10,917
17	Poland	8,355
18	Bangladesh	8,054
19	Belgium	7,159
20	Denmark	7,098
	Others	141,151
	<b>TOTAL</b>	<b>900,708</b>



## Number of tourist arrivals by month 2021 & 2022



## Number of tourist arrivals from top twenty source markets – 2018 & 2019

